

# MONTHLY MEMBERSHIP PROGRESS REPORT

District 2 T1

Results as of: 4/30/2026

GMT:

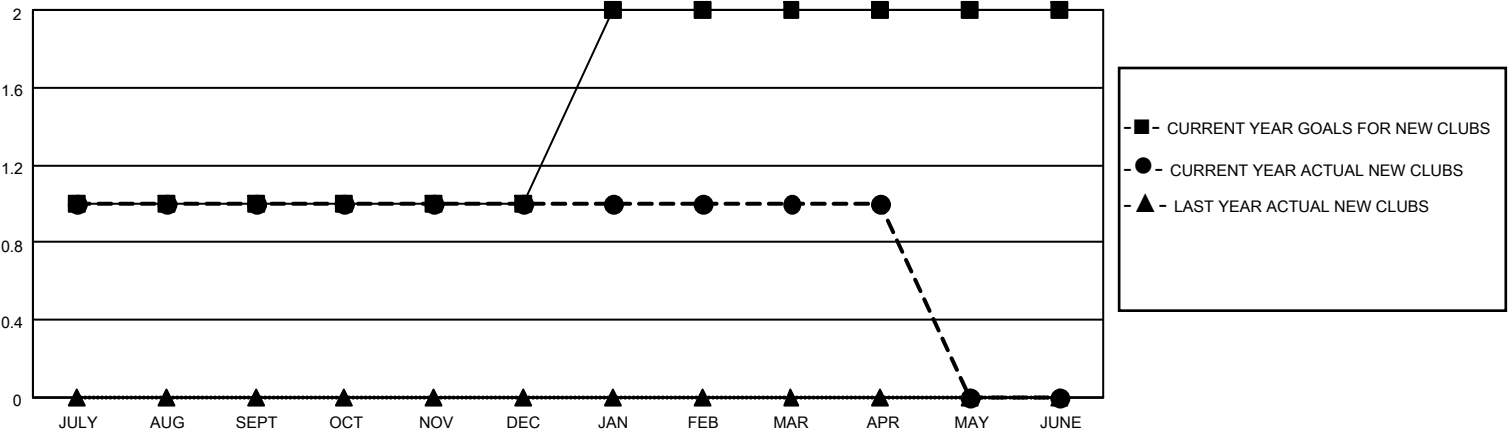
LOCATION TEXAS

GMT CA

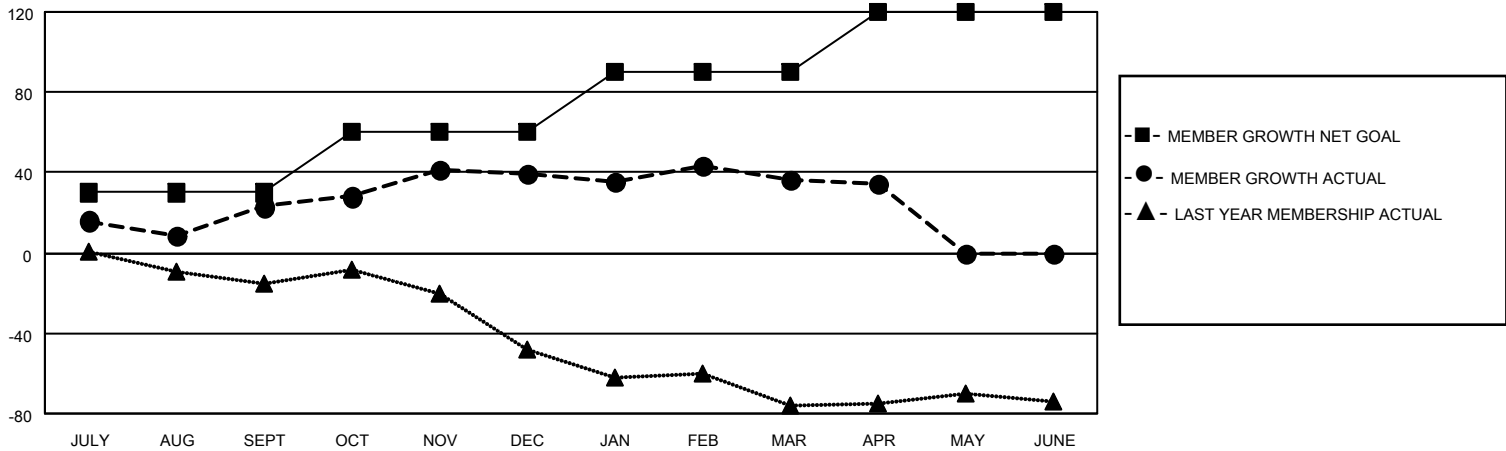
| Clubs                 |               |           |               |
|-----------------------|---------------|-----------|---------------|
| RESULTS FOR 2025-2026 |               |           |               |
| QUARTER               | NEW CLUB GOAL | NEW CLUBS | DROPPED CLUBS |
| JULY/AUG/SEPT         | 1             | 1         | 0             |
| OCT/NOV/DEC           | 0             | 0         | 0             |
| JAN/FEB/MAR           | 1             | 0         | 0             |
| APR/MAY/JUNE          | 0             | 0         | 0             |

| Members               |                        |                      |  |
|-----------------------|------------------------|----------------------|--|
| RESULTS FOR 2025-2026 |                        |                      |  |
| QUARTER               | MEMBER GROWTH NET GOAL | MEMBER GROWTH ACTUAL | DROPPED MEMBERS ACTUAL (including transfers) |
| JULY/AUG/SEPT         | 30                     | 83                   | 54   |
| OCT/NOV/DEC           | 30                     | 45                   | 26   |
| JAN/FEB/MAR           | 30                     | 31                   | 33   |
| APR/MAY/JUNE          | 30                     | 3                    | 5  |

GOALS AND ACTUAL NEW CLUBS CUMULATIVE



GOALS AND ACTUAL MEMBERS CUMULATIVE



|                        |   |                                    |
|------------------------|---|------------------------------------|
| DROPPED CLUBS: 0       | 18 CLUBS OF 35 ADDED 1 OR MORE NEW MEMBERS                | <b>GENDER DISTRIBUTION</b>         |
|                        |   | MALE 716 (59.37%)                  |
|                        |   | FEMALE 490 (40.63%)                |
| <b>DROPPED MEMBERS</b> | <a href="#">CLICK HERE FOR CUMULATIVE MEMBERSHIP DATA</a> | TOTAL FAMILY UNIT MEMBERS 140      |
| DECEASED 13            |   | FAMILY MEMBERS PAYING HALF DUES 70 |
| CLUB CANCELLED 0       |   |                                    |
| OTHER 105              |   |                                    |
| <b>TOTAL 118</b>       |   |                                    |